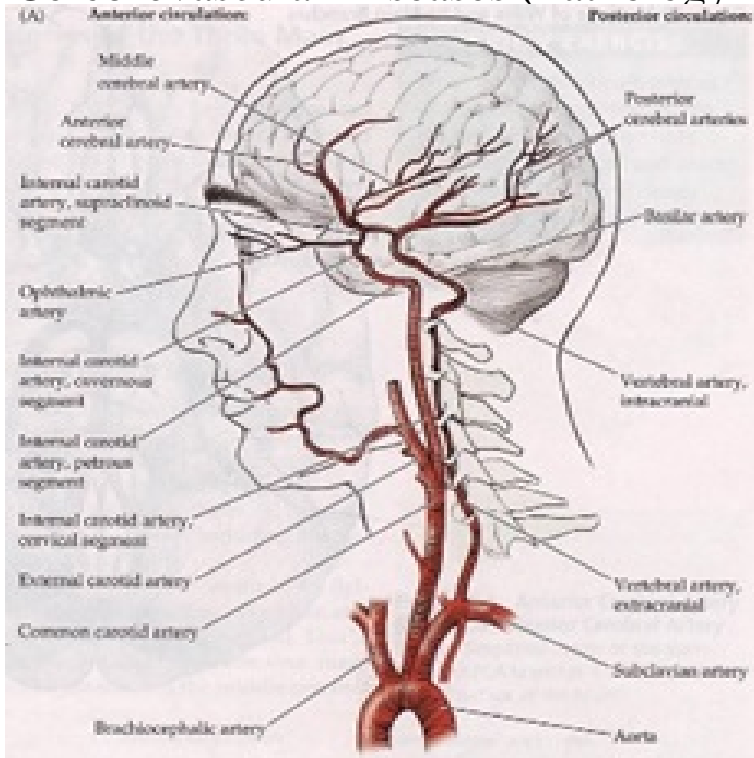


Cerebrovascular Diseases (Pathology



Cerebrovascular pathologies are commonly observed in the brains of older persons and clinical risk factors for vascular disease in older. Cerebrovascular disease includes a variety of medical conditions that affect the blood vessels .. "Clinical pathology of the shock syndromes". Journal of Pathology of Cerebrovascular Disease By Prof. J.T. Anim Department of Pathology. Cerebrovascular disease is a group of conditions, including stroke, transient ischemic attack, aneurysms, and blocked arteries. This article. Pathology of cerebrovascular diseases. H.K. Ng, Associate Dean (Education). Cerebrovascular disease. Cerebral infarction. Cerebral hemorrhage. Pathology of Cerebrovascular Disease. Cerebrovascular disease 3rd most common cause of death most common of all CNS diseases. Stroke = sudden. Brain perfusion and Cerebrovascular disease .. if the changes in the brain correspond to the timeline of events, particularly in forensic pathology cases. In this paper, we review the cerebral circulation and cerebrovascular disease (CVD). A separate category of cerebrovascular pathology can be delineated by .Neuropathology of cerebrovascular diseases. Aditya G Shivane. Abstract. Cerebrovascular diseases cause significant global economic burden to the healthcare. ORATION Pathology of Cerebrovascular Disease A.K. Banerjee Department of Histopathology Postgraduate Institute of Medical Education and Research. Clinical Characteristics of Cerebrovascular Pathology with Patients Suffering from Ph-Negative Myeloproliferative Disease. Tanashyan M.M.a. Hypertensive Cerebrovascular Disease Lacunes or lacunar infarcts (small infarcts) are the result of arteriolar pathology, and occur mainly in the basal ganglia. Most individuals in old age who receive a clinical diagnosis of Alzheimer's disease probably have some pathological features other than (but. Increasing evidence demonstrates that cerebral vessel disease and accumulation of brain pathology associate with cognitive decline and can lead to clinical. Presence of cerebrovascular disease, vascular pathology and vascular risk factors was studied in cases of the National. Alzheimer's Coordinating Centre. Start studying Cerebrovascular Disease Pathology. Learn vocabulary, terms, and more with flashcards, games, and other study tools. Recent epidemiological and clinico-pathological data indicate considerable overlap between cerebrovascular disease (CVD) and Alzheimer's disease (AD) and. Cerebrovascular disease can damage the brain by altering its blood supply, depriving and speech pathology contribute to Mayo's cerebrovascular research .

[\[PDF\] Album Vol. I \(Easy\) for Piano Four-Hands](#)

[\[PDF\] Home Free \(Heaven Hill\) \(Volume 8\)](#)

[\[PDF\] The Crossman Diaries - Selections from the Diaries of a Cabinet Minister 1964-1970 Richard Crossman](#)

[\[PDF\] Structured Reading \(7th Edition\) \(My Reading Lab\)](#)

[\[PDF\] Travel In The Ancient World](#)

[\[PDF\] Minox, Variations, in 8 X 11](#)

[\[PDF\] Cascade Aerodynamics \(Thermodynamics and fluid mechanics series\)](#)